

Warranty

Your 564 E Electric Fireplace is backed by up by a network of Specialty Hearth Dealers and certified factory trained Installers. Fireplace Xtrordinair warrants our products to be free from defects in material and workmanship for a period of 1 year from date of purchase. All electronics and labor are covered for 90 days. Trim and faces are covered for a period of one year.

Additional Fireplace Xtrordinair Electric Products

If you are in the market for other electric hearth products, Fireplace Xtrordinair manufactures a full line-up of electric fireplaces and fireplace inserts. Visit your nearest Specialty Hearth Dealer or www.fireplacex.com for more information.

Electric Fireplaces

21E



51EF



64EF



115EF



Electric Inserts

38EI



40EI



42EI



fireplacextrordinair™

See our complete line of fireplaces
Visit us online: www.fireplacex.com,
www.tempesttorch.com,

We reserve the right to change and improve our product at any time without prior notification.
Please refer to the Owner's Installation Manual for complete installation requirements.
Photos and illustrations are for descriptive purposes only • Copyright © 7/2014

#98800138



*Shown with Classic Arch face and
J. C. Huffman Williamsburg custom cabinet*

INSTALLATION CHOICES

Installation With A Fireplace Cabinet

Sterling™ Wood Cabinets

If you are looking for exceptional value and a quick, easy installation, add one of our Sterling Fireplace Cabinets (available in oak or walnut veneer). These cabinets allow the fireplace to be installed against any wall in your home. Fireplace Cabinets make it easy to relocate your fireplace at any time, so you can take the beauty and heat to any other room or house.



Face See Pages 4 & 5.

Metro Stainless Steel Mantel™

As an alternative to wood cabinet mantles, the Metro Mantel is constructed of brushed nickel sheet metal with a textured black power-coated hearth base. As you can see, the Metro Mantel is a striking contemporary accessory to the 564 E. All Architectural Double Door faces as well as the rectangular Metropolitan beveled faces will fit this fireplace and this mantle.



Metropolitan™ Face shown with Metro Mantel™



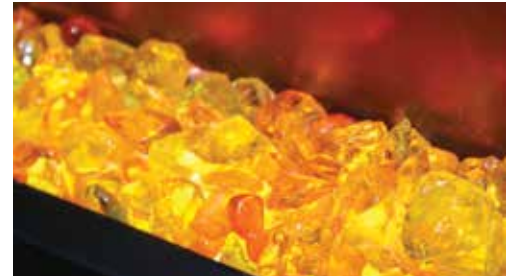
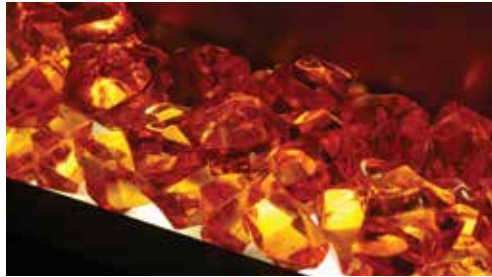
Custom Pre-Built Mantel

shown with Artisan™ Charcoal Painted Face.

Ask your Fireplace Xtordinaire dealer about other mantel options for the 564 E Electric Fireplace, such as the Windham™ Mantel manufactured by J. C. Huffman Co. shown here. Visit www.jchuffman.com for details on their mantel options.

INTERIOR CHOICES

Four different decorative interiors are included with each fireplace. They include a glowing logset with glowing embers, and a selection of three translucent colored media in Platinum, Orange and Mixed Glass.



DECORATIVE FACES

The "Original" Fireplace Xtrordinair **CLASSIC ARCH™** face is our most popular fireplace face. The graceful arched opening highlights the viewing glass. This combination of a curved glass area and arched top line has proven timeless in its appeal to homeowners across North America. The delicate design of the heat exchange area has the appearance of woven lace, a design departure from the horizontal louvers common to inexpensive fireplaces.

Metallic Black Paint -36 1/8" W x 29" H



The **FRENCH COUNTRY™** arched face is a perfect option with your Fireplace Xtrordinair electric fireplace. The French Country face frames the fire and adds a charming look to your room. The unique arch with its floral garland design comes in metallic black paint.

Metallic Black Paint -36 1/8" W x 29" H



The **METROPOLITAN™** fireplace face design features the same beautiful grillwork of the Classic Arch Face, but in a more linear, contemporary style. The beveled edges of the Metropolitan Face also create an intriguing, three-dimensional appearance.

Metallic Black Paint - 36 1/8" W x 29" H

